

INOTA 100 TECHNICAL SPECIFICATIONS

SPEED AND PERFORMANCE

Maximum Total Payload	100 kg. max
Maximum Speed	1.5 m/s
Turning Radius	0 mm
Suspension	Fixed
Docking Accuracy	X,Y Accuracy \pm 1cm, Yaw \pm 1°

SIZE AND WEIGHT

Dimensions	702 x 532 x 270 mm
Mass	60 kg

BATTERY AND POWER SYSTEM

Nominal Battery Voltage	14,4 V
Battery Capacity	48 Ah

INTERFACING AND COMMUNICATIONS

Communication	Wifi (802.11 a/b/g/n/ac, 5 Ghz)
Attachment Control Systems Power	12VDC 10A, unregulated, unswitched

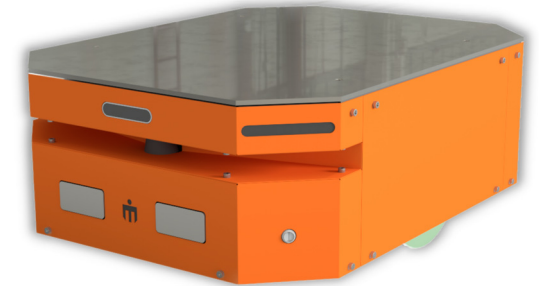
SAFETY AND AUTONOMY

Sensors and Cameras	Sick TIM 781, Intel real sense camera
Lights and Emergency Stopping	RGB LED lighting, 1 emergency stop button, 1 start button, 1 stop button
Navigation System	Natural Navigation

INOTA 100 CHARGING UNIT TECHNICAL SPECIFICATIONS

Charging Time	4 hours
Communication	Ethernet POE, RS232
Voltage	16 V DC 28A
Inpower	220 V AC

INOTA 100



CHARGING UNIT

